

# Falcon Mill - Art Hub

## Project Overview

Falcon Mill is a grade two listed building located in an industrial area of Bolton. The mill is home to FamAs (Falcon Mill Art Studios), a community of over forty artists, including painters, designers, crafts people and actors and is located on the second and third floors of the building.

The idea behind this project was to convert the currently empty fourth floor into an 'Art Hub' that can support the needs of FamAs artists (art supplies, workshop spaces etc) and create somewhere for the local community to come.

The pictures opposite show the current FamAs public spaces and galleries.



# Falcon Mill - Art Hub

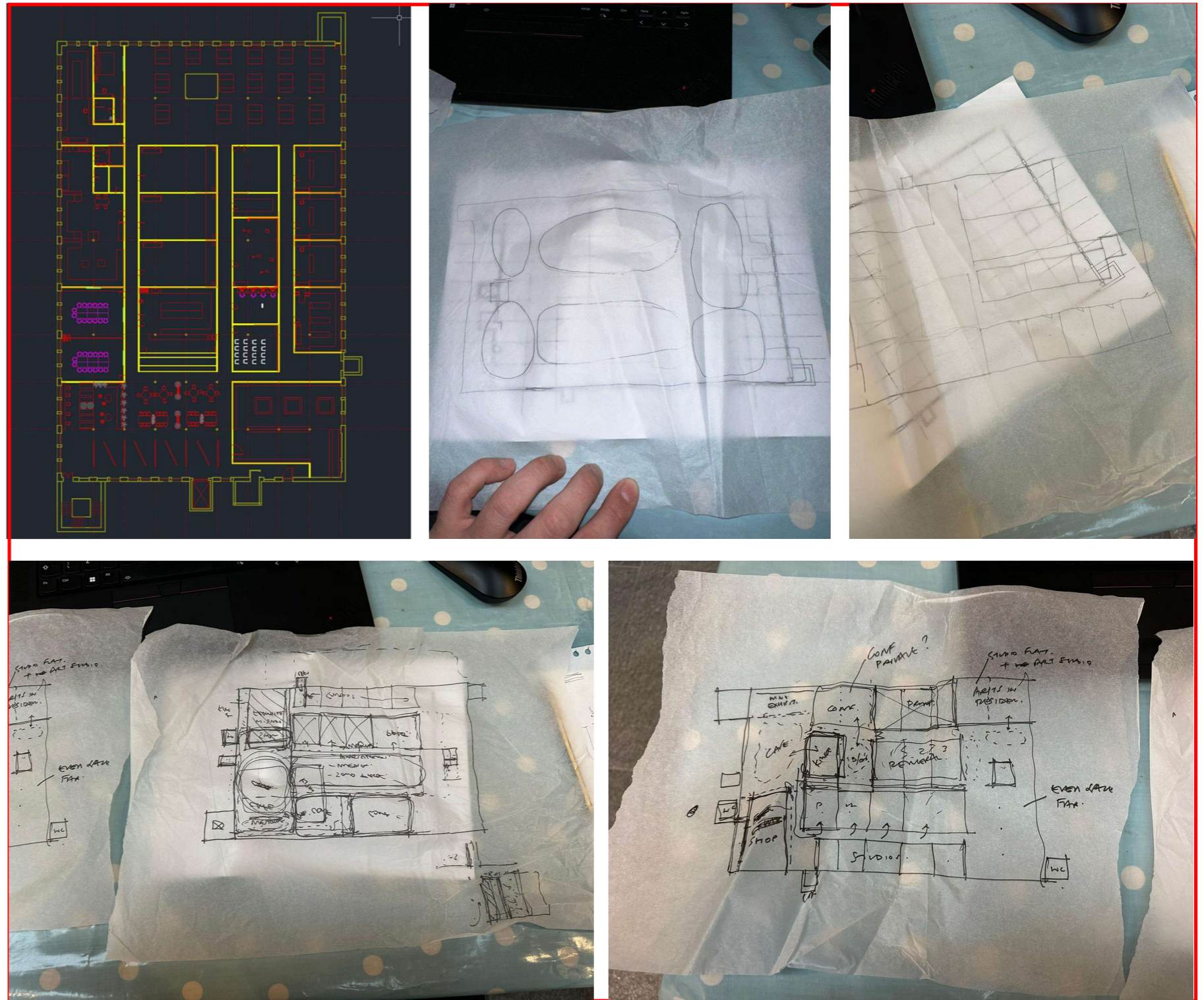
## Design Process

I started the design process by surveying the fourth floor of the mill. Then I drew up the floor plan in Autocad, printed it out and then used tracing paper and pen to zone the space and think about the flow of the areas from the entrance staircase.

Because the mill is such a deep building, the main design challenge was no natural light in the central areas. I decided to locate rooms near the middle of the building that need less or no light, such as dark rooms, theatre space and storage.

Another challenge was to locate key spaces near to each other, such as the café that needed to be close to the shop and conference rooms.

My sketches show some of this thinking.



# Falcon Mill - Art Hub

## 3D Sketchup Models

Shown in the screen shots opposite are the final 3D Sketchup models of the Art Hub Space.

The views show how the space flows from the entrance off the main staircase, into the café / exhibition space which has flexible display boards.

I have located the shop and conference rooms directly next to the more public spaces. The shop and café will hopefully encourage the public and other artist to the mill.

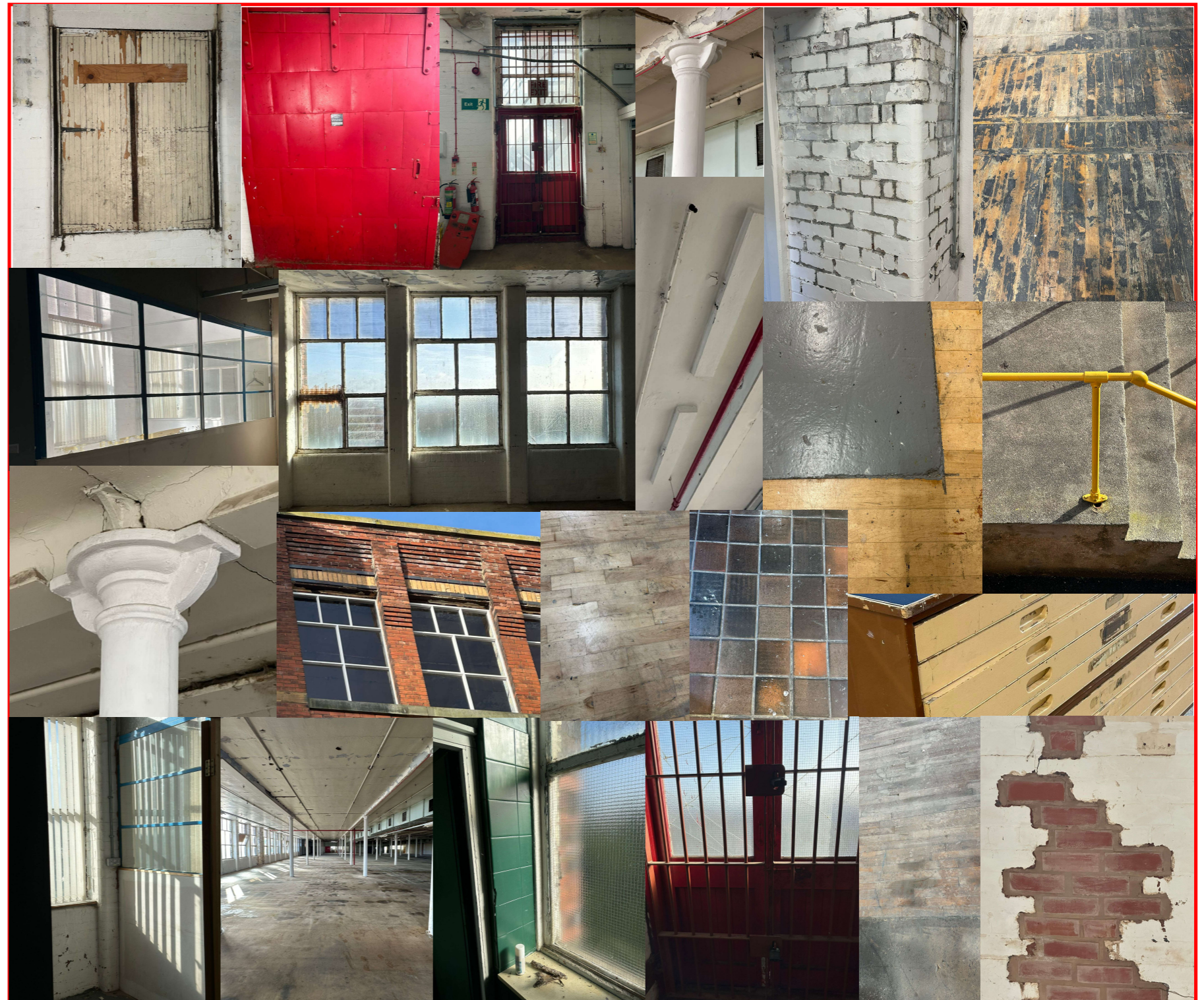
Two corridors link the front of the Art Hub with printing studios and artist rooms along the sides of the mill. And there is a large open area at the rear which can be used for events and art fairs.



# Falcon Mill - Art Hub

## Existing Finishes – Mood Board

These are photos of traditional features from around the mill. I will try and use these materials, colours and structures within my redesign of the café space.



# Falcon Mill - Art Hub

## Café Seating Area

The 3d view opposite shows my developed ideas for the café seating area. The idea is to introduce some of the existing finishes shown on the previous page into the design.

I like the idea of using brick partitions to divide the space and give the seating area some structure. This also works well using the existing grid of steel columns.

I have brought in some planting to soften the industrial impact of the building. This also helps to give people some privacy when meeting in the cafe.

